

CASTOR

Roof Vent

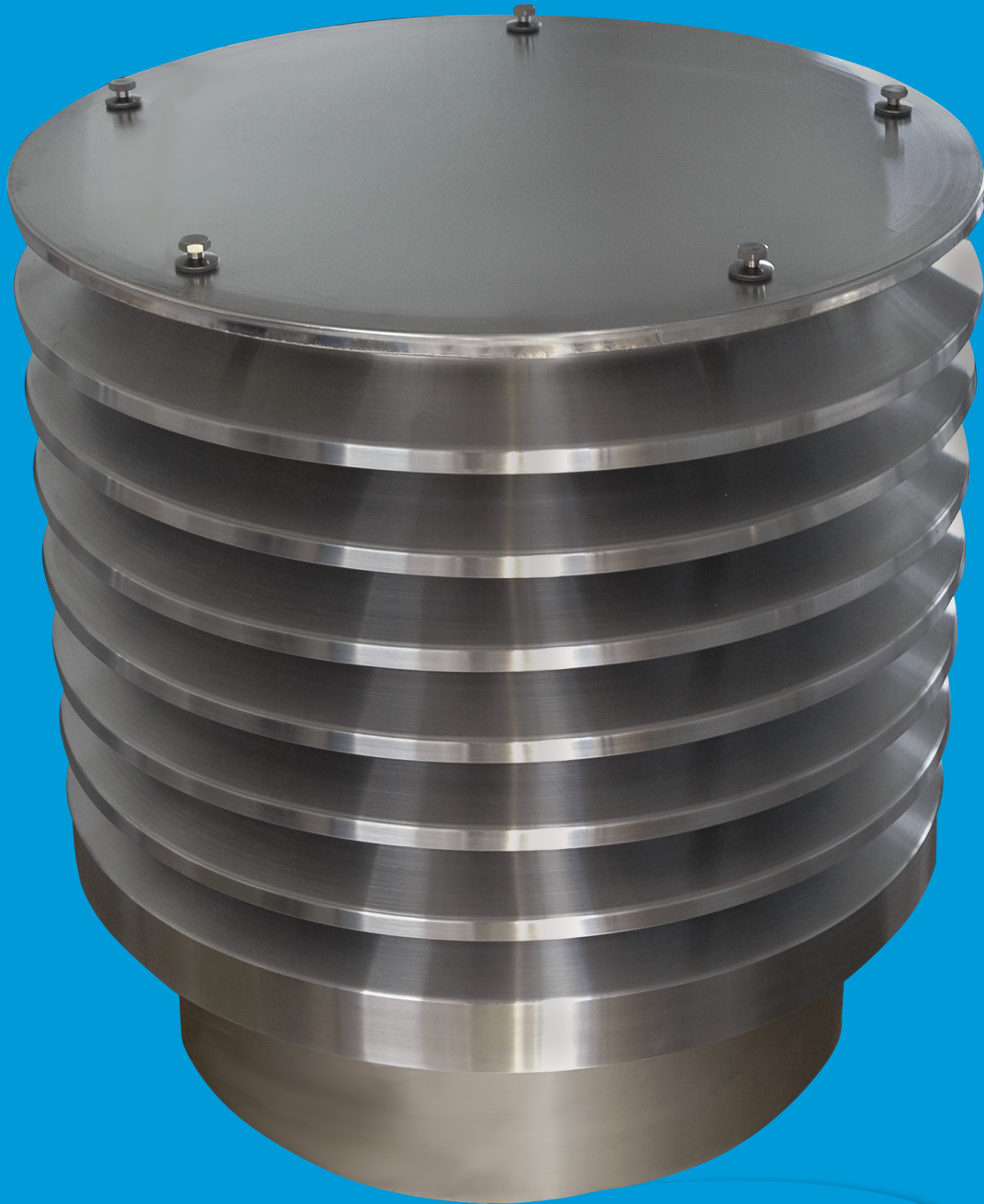


Illustration: Nominal Diameter \varnothing 500 mm

Type CT

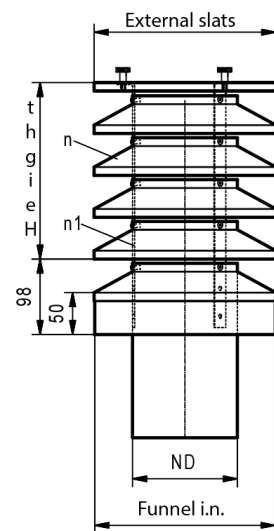
Type CT

The CASTOR Roof Vent impresses with its delicate construction featuring horizontal louvers that prevent snow and water from entering the pipe system. Due to its appealing design, it has become indispensable in the ventilation sector.

Technical Specifications

ND	Slats outside	Funnel in light	Number (n) slats	Number (n1) Supports	Height
100*	208	203	4	3	265
125*	235	230	4	3	265
150*	260	255	4	3	265
160	260	265	4	3	265
180*	290	285	4	3	265
200*	310	305	4	3	265
224*	334	329	5	3	325
250*	360	355	5	3	325
280	410	385	5	3	325
300*	410	405	5	3	325
315	410	420	5	3	325
350*	460	455	5	3	325
355	460	460	5	3	325
400*	510	505	6	5	385
450	560	555	6	5	385
500	610	605	6	5	385

* with flow forming pieces



The number of louvers and supports is variable. The round louvered cap is available in all standard construction metals such as copper, aluminum, and stainless steel.

NEW!

