

Ditta

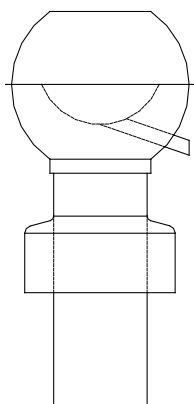
Ordinazione

Richiesta

Tel / Fax

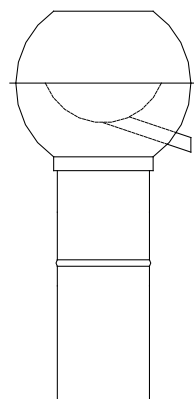
Comm.

Termine



Tipo PMT  
tubo in acciaio Ni Cr lungo 250 mm, con imbuto terminale

| Dimensione nom. | Rame | Aluman | Zinco Cu-Ti |
|-----------------|------|--------|-------------|
| Ø 100           |      |        |             |
| Ø 125           |      |        |             |
| Ø 150           |      |        |             |



Tipo POT  
tubo lungo 200 mm, con rilievo

| Dimensione nom. | Rame | Aluman | Zinco Cu-Ti |
|-----------------|------|--------|-------------|
| Ø 100           |      |        |             |
| Ø 125           |      |        |             |
| Ø 150           |      |        |             |

Nota

