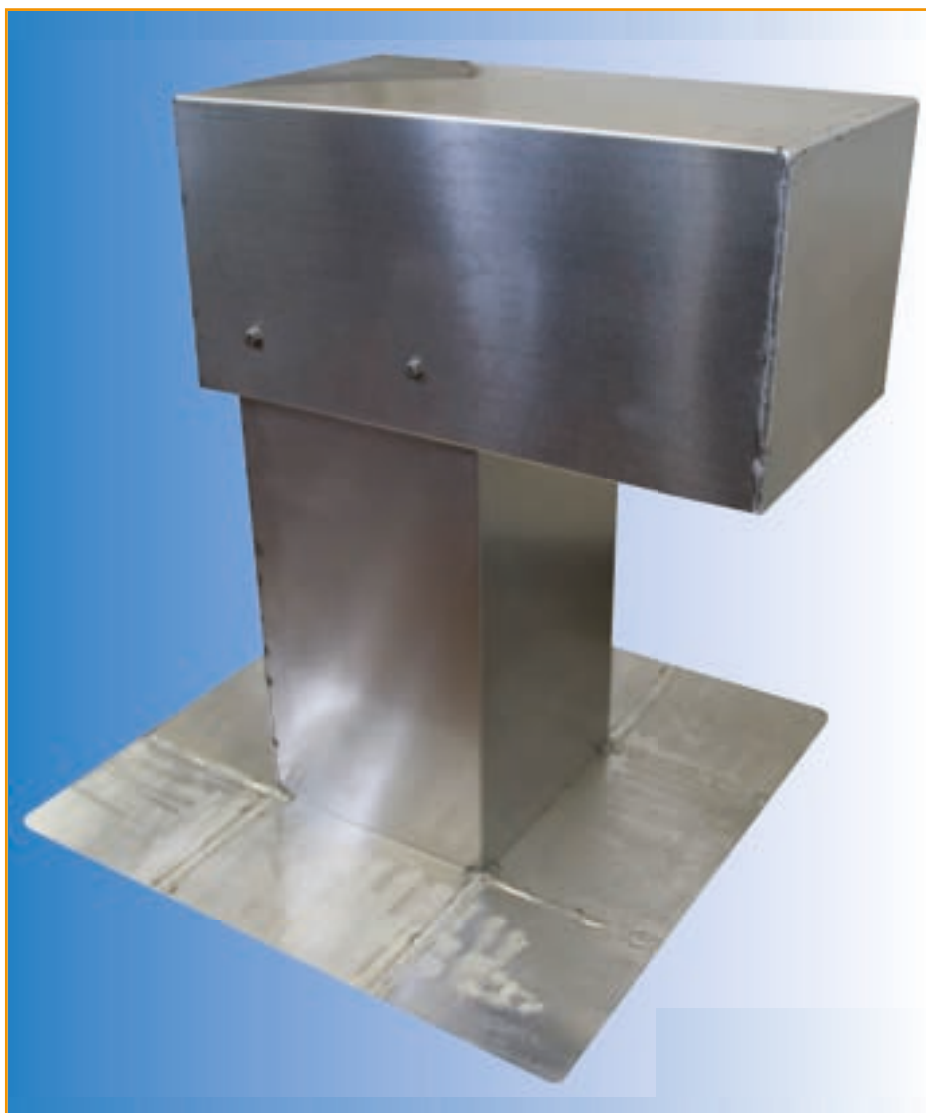
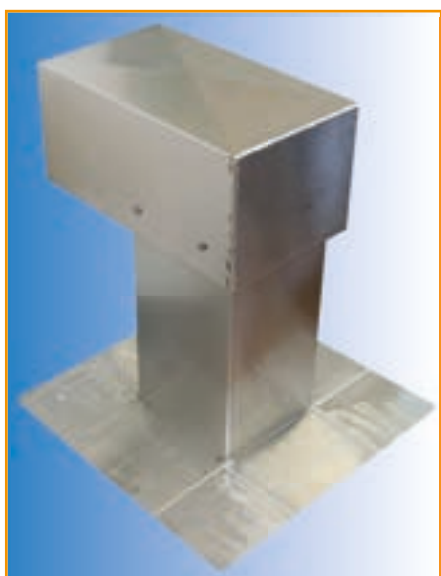


Flat roof exit for conductor tracks, Type KAB-KA 200



Exit consisting of a tray with a square base and a horizontal lid.



Tray all around 150 mm wide, roughened



View from below into the lid

Materials:
- Aluminum
- Stainless Steel

Dimensions: 200 x 200 mm
Base height: 420 mm Total height: 550 mm

Other dimensions:
as requested