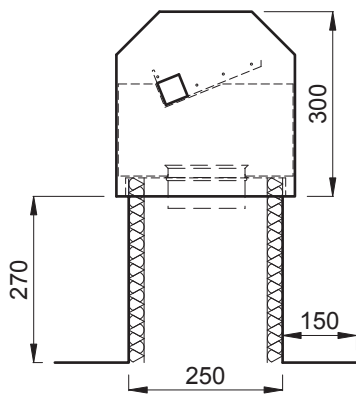


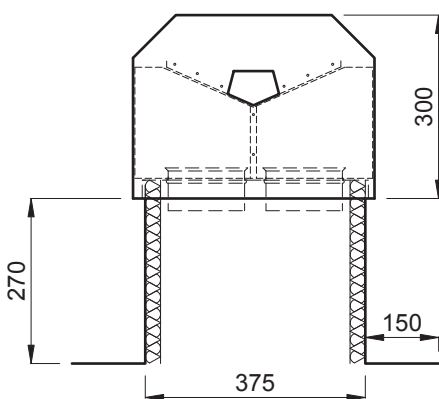
Roof Hood

Roof Hood for Multi-Purpose Ventilation Consisting of Three Components:

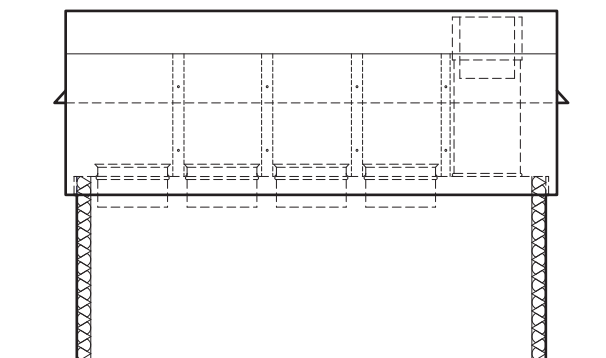
- Roof base with support edge, internally 1" insulated.
- Intermediate plate with single nozzle.
- Rain cover for vertical exhaust with all-around shielded exhaust pipes.



Number of nozzles	Base dimension width x length
1	250 x 250 mm
2	250 x 360 mm
3	250 x 520 mm
4	250 x 680 mm
5	250 x 840 mm
6	250 x 1000 mm
7	250 x 1160 mm
8	250 x 1320 mm

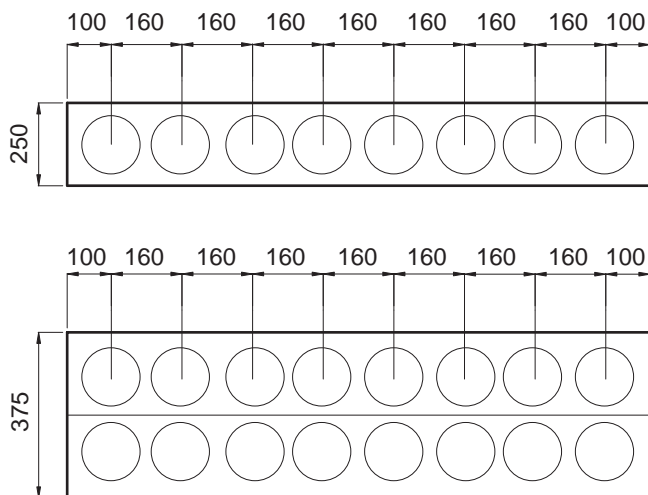


Number of nozzles per row	Base dimension width x length
2+2	375 x 375 mm
3+3	375 x 520 mm
4+4	375 x 680 mm
5+5	375 x 840 mm
6+6	375 x 1000 mm
7+7	375 x 1160 mm
8+8	375 x 1320 mm



Roof Hood

Standard Dimensioning

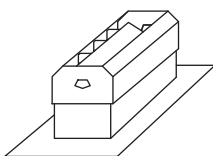


If ventilation ducts of 150 mm or larger are used in pairs, the initial and axial dimensions will change.

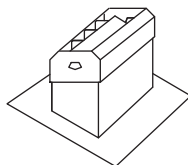
It is possible to use different sizes of ducts.

Variants

Type HF
for flat roof



Type HQ
for pitched parallel
to the ridge



Type HL
for pitched
90° to the ridge

